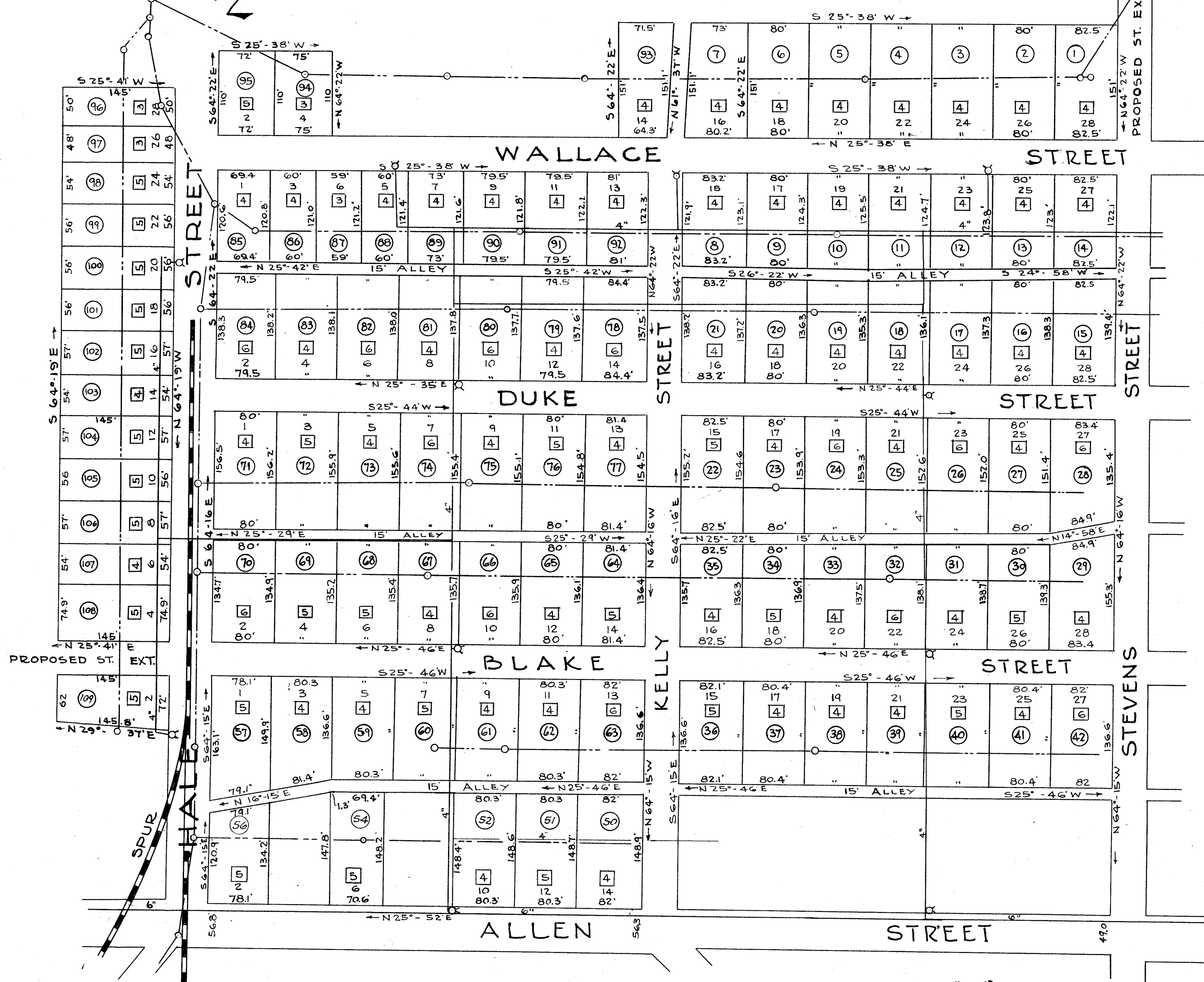


SECTION "3"



NOTE
 IRON PINS AT ALL PROPERTY CORNERS.
 ALL STREETS PAVED AND WITH SIDEWALKS, CURB & GUTTER.
 PROPERTY LINES & STREET RIGHT-OF-WAY ARE AS ESTABLISHED - ONE FOOT BACK OF EXISTING SIDEWALK.
 HOUSES ON THIS MAP ARE SHOWN IN APPROXIMATE LOCATION.

LEGEND.

- HOUSE & NO OF ROOMS [5]
- STREET NUMBERS [2]
- SANITARY SEWER LINE [---]
- WATER LINE [---]
- SEWER MANHOLE [o]
- FIRE HYDRANT [x]
- LOT NUMBERS [75]

SECTION - "3"
 SUBDIVISION
 FOR
 DUNEAN MILLS

GREENVILLE · S.C.

AUG 24 1948
 18591

Filed This 24 day of Aug 1948
 And Recorded in Vol. 2 Page 133 of
 Ollie Jamison
 Register Mesne Conveyance Greenville County, S.C.

PICKELL & PICKELL · ENGINEERS · GREENVILLE, S.C.

SCALE · 1"=100'
 DATE · JUNE · 15 · 1948
 REVISED · JUNE 23 · 1948